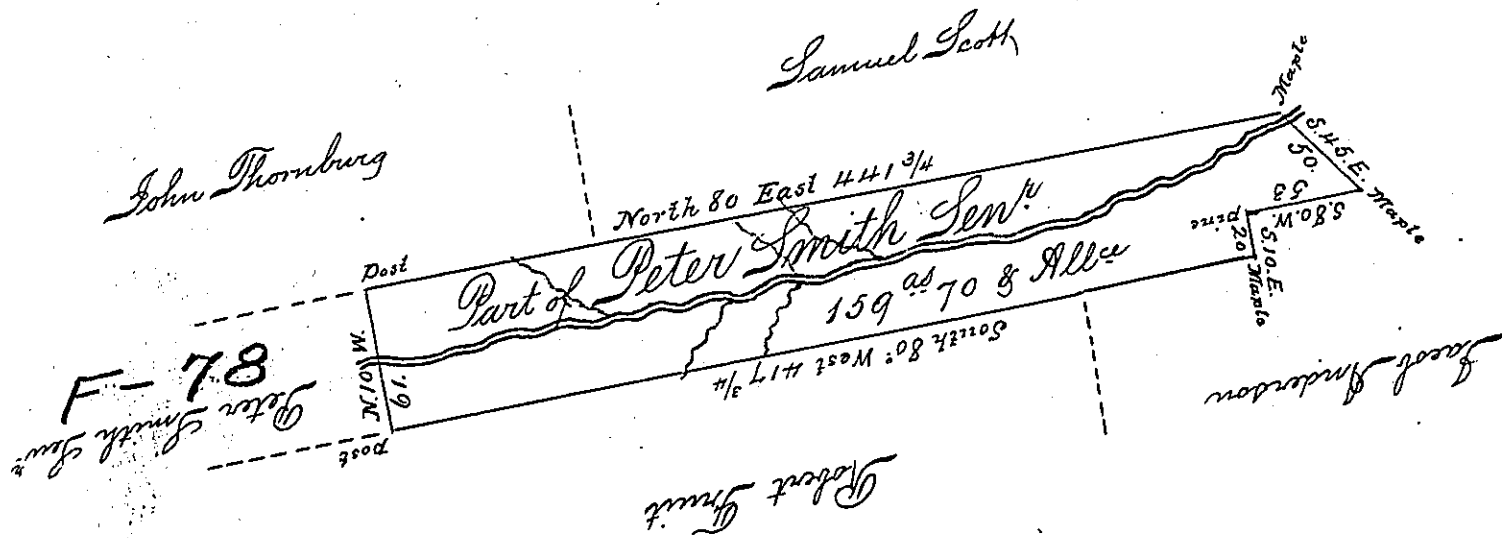


(See Page 220)



$173 \frac{1}{2}$
 $441 \frac{3}{4}$
 \hline
 $615 \frac{1}{4}$

Draught of a Tract of Land Situate on the
 Westerly branch of Quacake, Called Hazel Creek
 in Sugarloaf Township Luzerne County, adjoining
 Lands Surveyed to Samuel Scott and others, Con-
 taining One Hundred fifty nine Acres and Seventy
 perches and allowance of Six per cent &c being a
 moiety or half part of a larger tract containing
 Three hundred and Eighteen acres & one hun-
 dred forty perches & the usual allowance &c
 Originally Surveyed to Peter Smith Senr the 9th
 October A.D. 1784 by virtue of his Warrant dated the 1st July 1784 and Resur-
 veyed the 2^d day of December A.D. 1830

To Jacob Spangler, Esq^r } Newry Colt D.S.
 Surveyor General

IN TESTIMONY that the above is a copy of the original remaining on file in the
 Department of Internal Affairs of Pennsylvania, made con-
 formably to an Act of Assembly approved the 16th day of
 February, 1833. I have hereunto set my Hand and caused
 the Seal of said Department to be affixed at Harrisburg, this

Seventh day of July 1896

James W. Fatta
 Secretary of Internal Affairs